

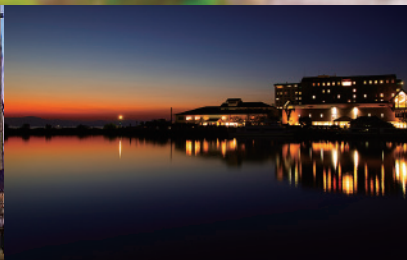


Lake side Resort

For the Best day from Kyoto/Osaka



KITABIWAKO HOTEL
G R A Z I E



Hotel Concept



Hotel is located in Nagahama city, a sister city of Verona in northern Italy.
Please spend your special time in our hotel with the concept of the townscape of Verona and Italian style.



The statue of Juliet, donated by Vernon, is said to be a symbol of happiness to bring fulfillment of love when touched on the right breast.

Statue of Juliet (donated by Verona city)

Guest Room

Relaxing and comfortable guestrooms awaits you right in front of the beautiful lake.

Our Suite rooms, each with a different design are popular with Hotel Grazie guests.

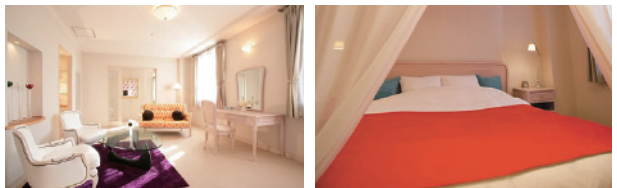
Uniquely designed guestrooms from Classic, modern to simple styles at Hotel Grazie offer you a perfect location to enjoy your vacation in a resort setting.



Suite Room



Maisonette style Suite with lower floor living room and upper floor bedroom, rich in appearance with a homely atmosphere.



Spacious two room Suite, with an ambiance of



Two room spacious Suite of exotic ambiance.



Two room spacious Suite filled with resort atmosphere.



Spacious two room suite of nostalgic ambiance furnished with antique furniture.



Maisonette style Suite with lower floor living and upperfloor bedroom with stylish ambiance.

DINING

The hotel restaurants, the roots of Hotel Grazie's identity, serve wide variety of menu choices to stimulate your taste buds.

Enjoy to your heart's content the heavenly flavors our chefs recreates from the 87year culinary tradition inherited from their piers combine with best ingredients.

Season of offer a buffet breakfast is available every morning at the property. Guests can enjoy a morning time while looking at Lake Biwa.



Ristorante "La Spiaggia"

Serves rich flavors drawn from best ingredients carefully selected by the chef and charcoal grilled meat and fish.

Food Italian
Open for Lunch, Dinner

Budget: Lunch JPY3,000~5,000 Dinner JPY8,000~10,000



Japanese restaurant "CHIKUBUSHIMA"

A restaurant serving traditional Japanese meals rich with seasonal ingredients in a casual atmosphere.

Food Japanese, Local
Open for Lunch, Dinner

Budget: Lunch JPY3,000~5,000 Dinner JPY8,000~10,000



Cafe&Pizzeria "VERONA"

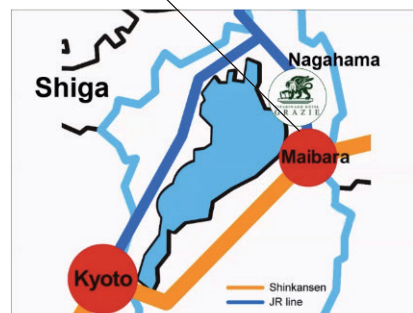
Delicious wood-fired pizza, popular pasta, and carefully selected quality teas and coffee served with variety of hotel made sweets.

Open for Lunch & teatime *take out OK

Budget: Pizza&Lunch JPY1,500~2,000 cafe&Sweets JPY500~800



Access



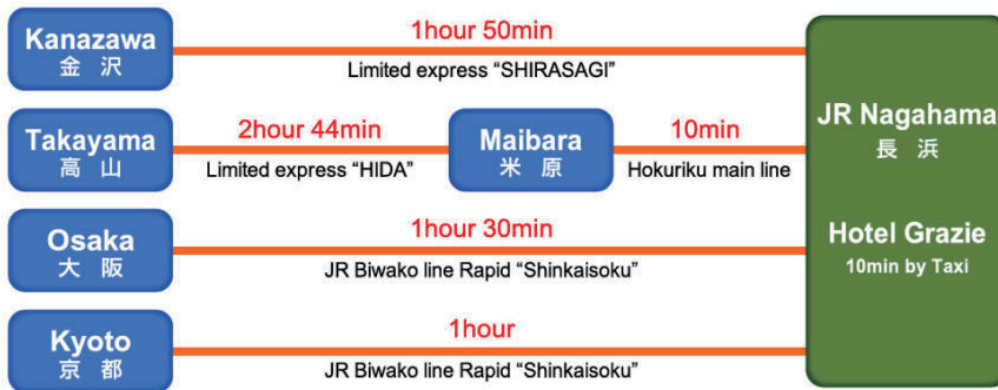
■ From Kyoto
Japan Railway Kyoto ~ Nagahama Line
(1 h 10 m by Rapid Express – Platform 2 Kyoto Station)

■ From Osaka
Japan Railway Osaka ~ Nagahama Line
(1 h 45 m by Rapid Express – Platform 8 Osaka Station)

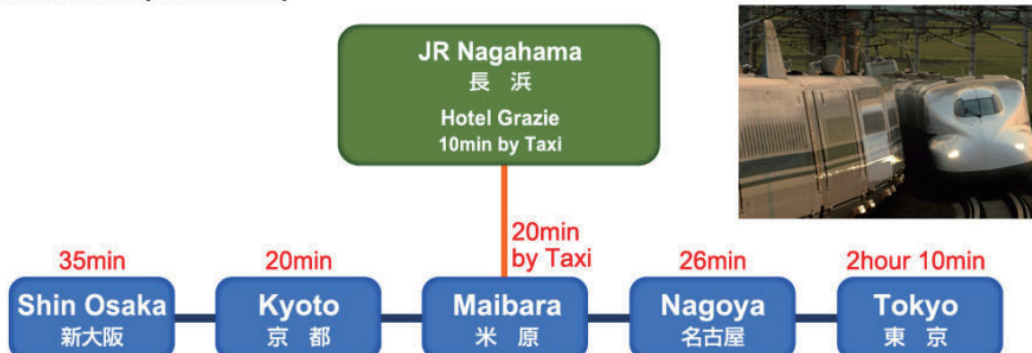
■ From Kanazawa
Japan Railway Kanazawa ~ Maibara/Nagoya Line
(1 h 50 m by Express “Shirasagi” – Platform 1)

■ By Bullet Train
Get off at Maibara Station of the Bullet Train Line and proceed to Local lines. Take a train going in Nagahama direction
(Maibara – Nagahama 10 minutes)

Regular Train lines



Shinkansen (Bullet Train)





① Kuro Kabe Glass Square

With its location on the busy travel route between Kyoto and Tokyo, Nagahama prospered as a town and the old cityscape is still intact. Preserved buildings from the bygone days forms the present shopping arcade. The black walled old bank building is behind the present name. Take a stroll into the past and check for souvenirs found no where else.



② Discover magnificent landscapes by the lake

The lake, deepest in this region close considered as most beautiful with its deep blue waters, lush greenery and rich wildlife. Discover the beauty around the hotel and the surrounding areas. Sunset here is known as one of most beautiful in Japan.



③ Nagahama Castle & Houkouen-Park adjacent to the hotel

Toyotomi Hideyoshi, one of the most celebrated Daimyos (ruler) in Japanese history built a castle and lived here for sometime 440 years ago. The original castle was demolished by Tokugawa regime in 1615. The current Castle is a reconstruction completed in 1983 and contains a museum of samurai armor.



④ Mount Ibuki – 30 minutes by car

1377 meter high Mount Ibuki, the tallest in Shiga Prefecture belong to one of the 100 popular mountains in the country. Mount Ibuki has recorded the worlds heaviest snowfall once to the height of 11.82 m. It is also known for its fauna and flora and the magnificent views. To ascend the mountain easiest is by car through the driveway to the top. Hiking trails begin at the base of the mountain by Ibuki –Tozan guchi bus stop.



⑤ Chikubu island cruise – 25 minute boat ride

Take a sightseeing boat from the jetty right in front of the hotel to the nearby Chikubu island also known as Island of mystery or Island of Gods. 6 km offshore and 2 km in circumference, Chikubu island is home to a Buddhist temple and a Shinto shrine, a rare combination today but was a common feature before the Meiji Restoration 150 years ago. It is said that many generals visited the island during the warring periods.



⑥ Doganji Temple – 30 minutes by car

A Bodhisatva statue with eleven faces known as Kannon in Japanese (Buddha of a distance future) is worshipped here at Doganji temple. The statue is a national treasure and is known as a masterpiece in Japanese sculpting history. It is also considered as Japan's most beautiful Eleven Faced Kannon statue.



⑦ Rosan&Berry Tawada – 20 minutes by car

This 13,000 square meter of garden paradise comprised with original trees, plants and beautiful flowers of the season, is landscaped to harmonize with the natural surroundings. In garden restaurants buffets and barbecues are served with seasonal vegetables. A wine shop is also found inside the complex.



⑧ Annual Plum Bonsai Exhibition – 5 minute walk

Hundreds of Bonsai Plum trees in full bloom are displayed at this annual event held from January 20th to March 10th at an old gallery nearby the hotel. Some trees are over 2 meters in height and some are very old, as old as 400 years. The event draws many Bonsai enthusiasts from all over Japan to Nagahama.





KITABIWAKO HOTEL
G R A Z I E



SOPRA
delle Grazie

4-17 Minatomachi Nagahama Shiga Japan Zip 526-0067

Tel 0749-62-7777

www.k-grazie.co.jp



**JAPAN HOTEL
ASSOCIATION**
Member's Hotel